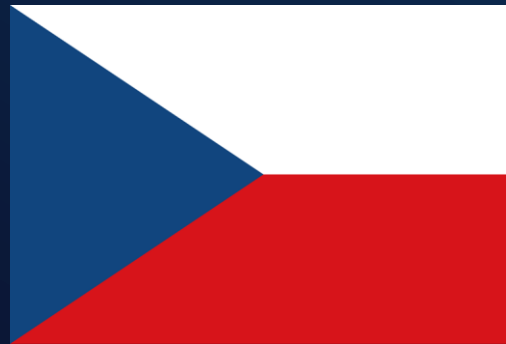




CZECH REPUBLIC

# LIGHT AIRCRAFT ASSOCIATION of the Czech Republic

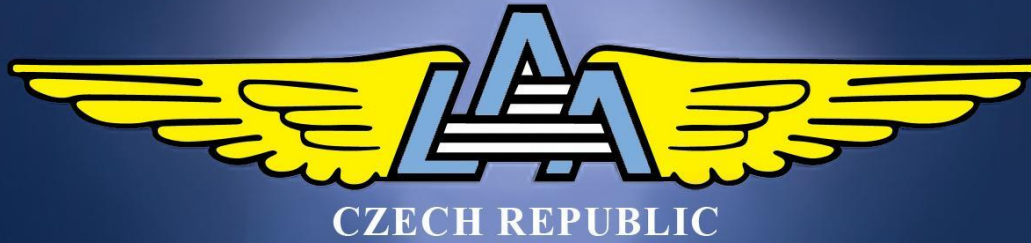


Jan Pařez

[jan.parez@fs.cvut.cz](mailto:jan.parez@fs.cvut.cz)

Oldřich Štumbauer

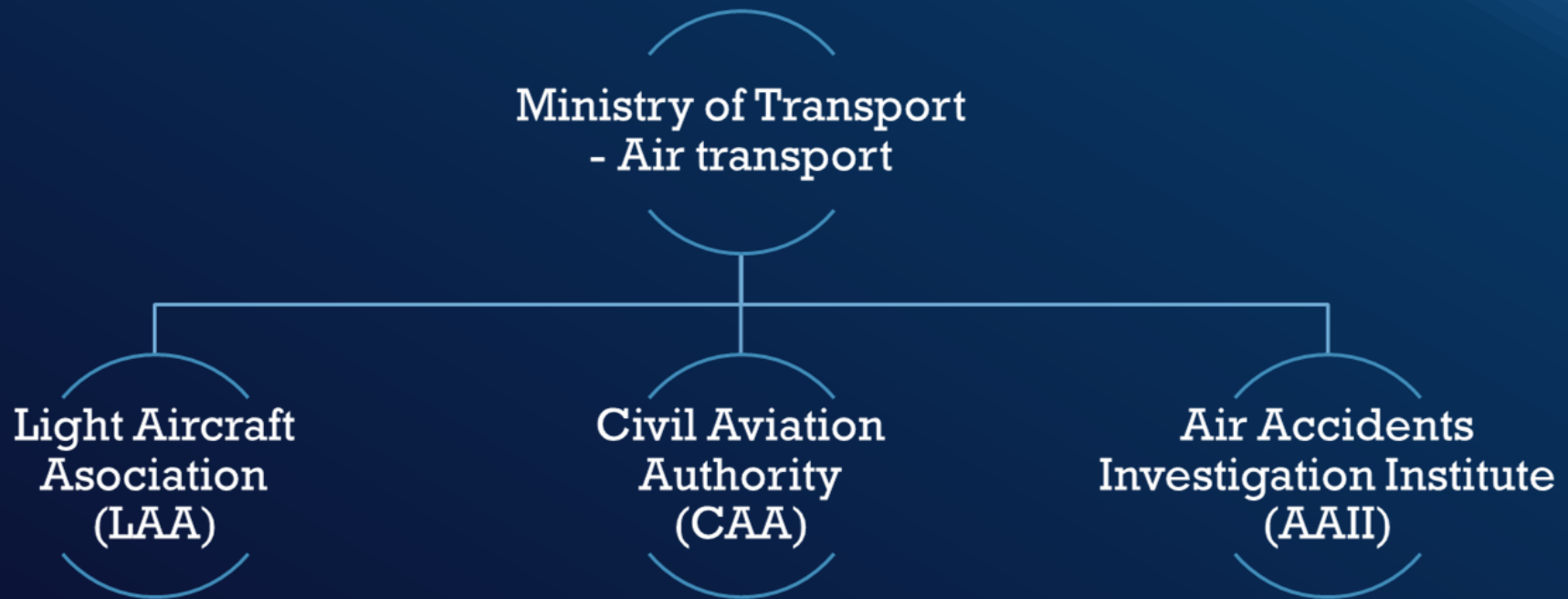
[stumbauer@gmail.com](mailto:stumbauer@gmail.com)



# Airspace and SFD Flying

# Responsibility in Czech aviation

- Position of each authorities in the CR



Close cooperation of all authorities  
that are on the same level

# LAA CR – Idea

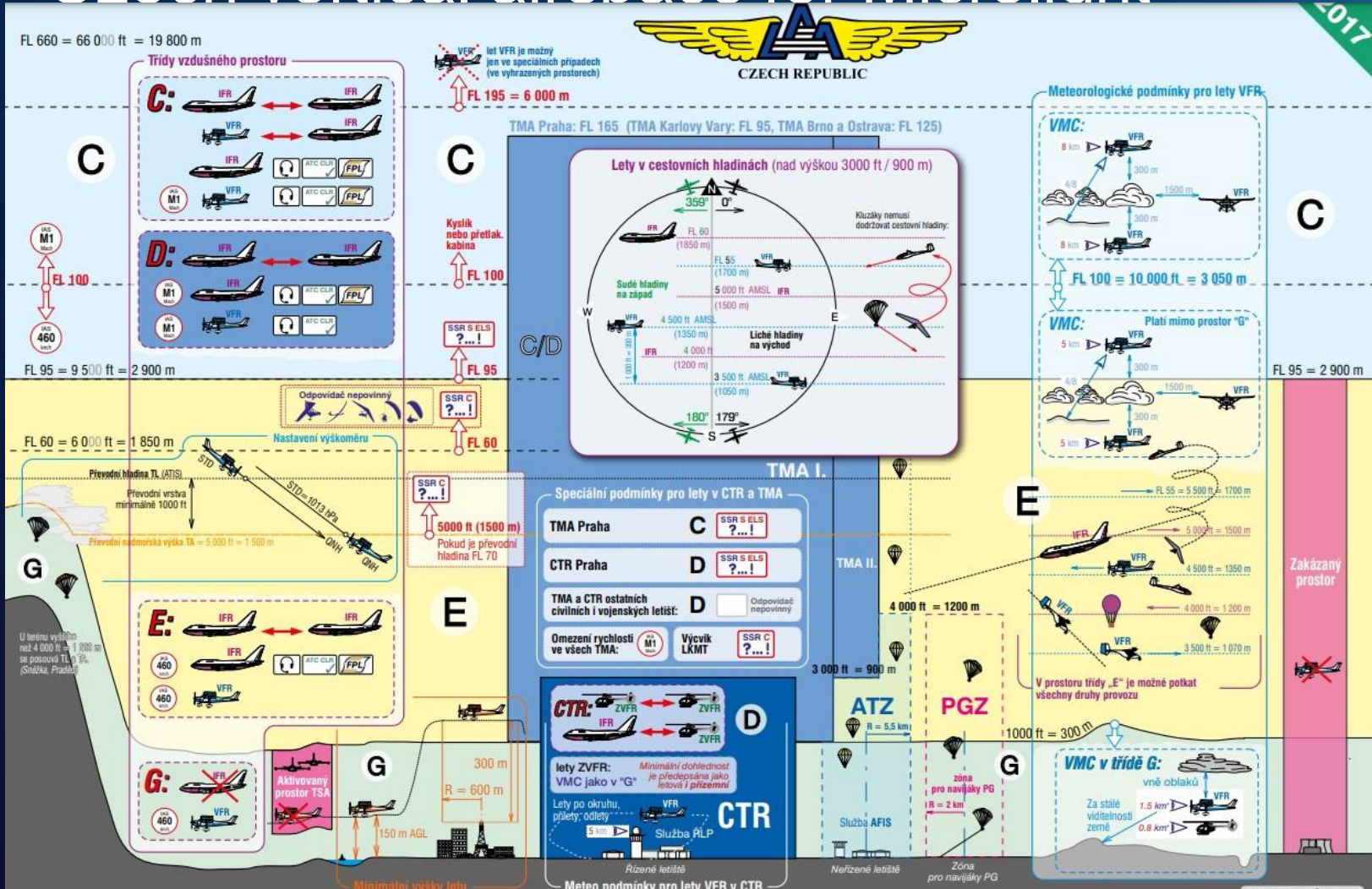
- Sport Flying Device may be flown by:
  - ▣ Pilot, holder of the valid Pilot Licence (ULL Pilot) with the adequate type qualification, or
  - ▣ Pilot - student on conditions established by the training programme
- Before the flight, during the flight and just after finishing the flight the pilot must be able to submit following valid documents:
  - ▣ Identity document,
  - ▣ Pilot Licence or the Student - pilot document,
  - ▣ Medical ability examination ICAO Class II,
  - ▣ Airworthiness Certificate of the SFD,
  - ▣ Third party liability Insurance certificate.

- Relevant AIP for entry and exit czech airspace
  - ▣ The operations of foreign SFDs (microlights, ultralights, ecolights, etc.) must comply with the provisions of GEN 1.2.6.3 AIP CR.
  - ▣ Arrival, transit and departure must comply with provisions of GEN 1.2.1 AIP CR.
  - ▣ During any operational flight over the CR territory pilots must respect airspace limitations, published in aeronautical maps, the airspace division, AIP, NOTAM, AUP and similar documents.

# LAA CR - Airspace

www.laacr.cz

## Czech vertical airspace for Microlight



# LAA CR - Airspace

www.laacr.cz

## Czech GND-FL 95 airspace for Microlight

### Mapa spodního vzdušného prostoru CR (GND-FL95)

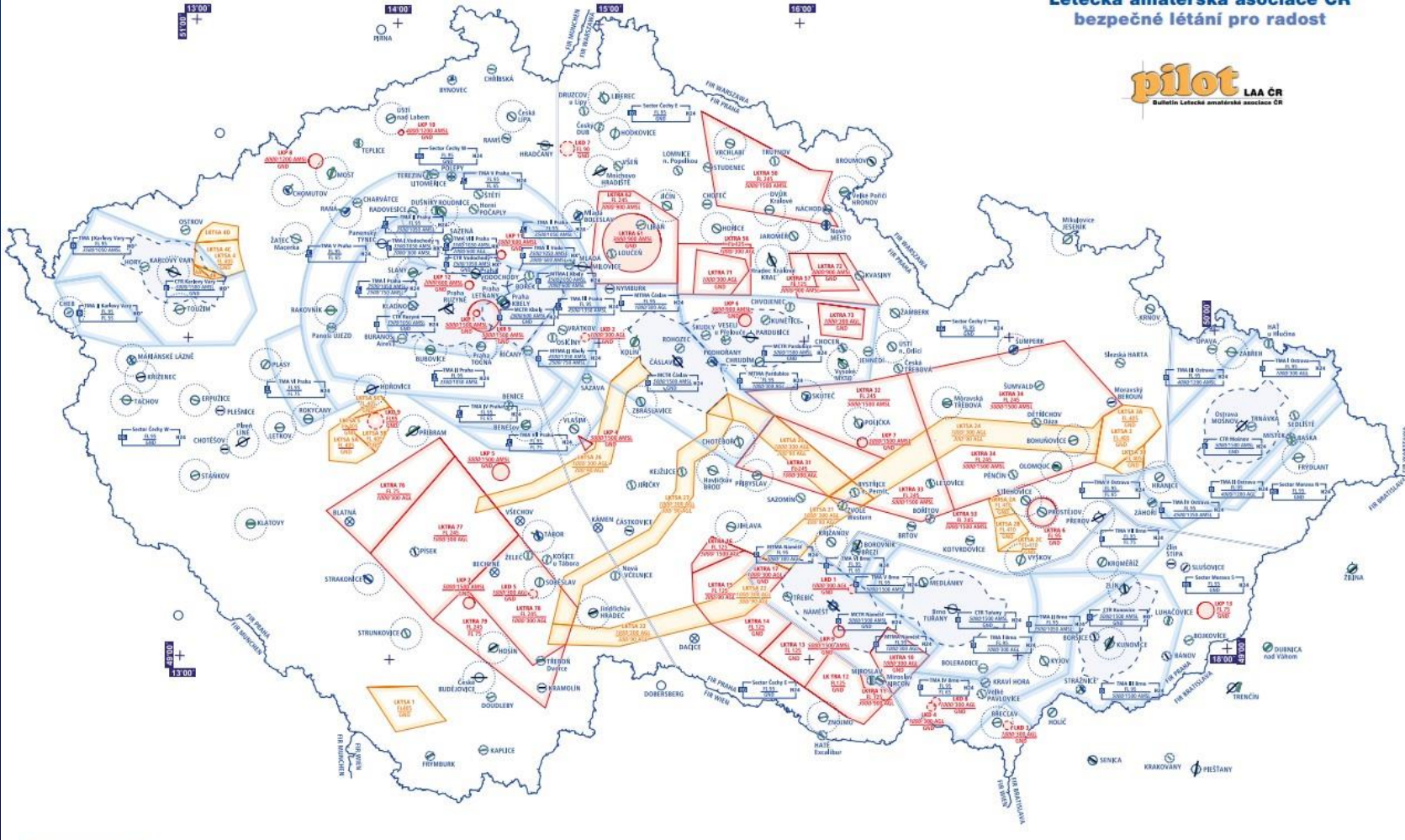
Aktuálnost údajů 30. 3. 2017



CZECH REPUBLIC

Letecká amatérská asociace ČR  
bezpečné létání pro radost

**pilot** LAA ČR  
Bulletin Letecké amatérské asociace ČR



- Relevant AIP for entry and exit czech airspace
  - ▣ SFD are **allowed** to fly in C, D, E, G airspace in VMC
  - ▣ SFD are **allowed** to fly in controlled (CTR, TMA),
  - ▣ **Not allowed** in restricted airspace: Prohibited zones
  - ▣ **Not allowed** in active zones: TSA zones, or TRA without ATC permission



# LAA CR – AIP

- Rules for entry, overflight and landing in the CR
  - ▣ Valid documents
  - ▣ Permission required: **NO**
  - ▣ Flight plan:
    - **NO**: airplane and pilot registered inside Schengen area, but it depends on neighboring country of arrival (DE, PL, SK)
    - **YES**: airplane and pilot registered outside schengen or arrival from Austria
  - ▣ Landing and take-off follow domestic rules

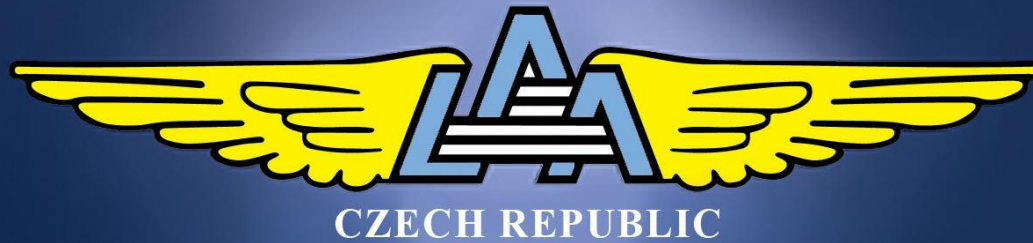
# LAA CR – Opt-Out

- Opt-out for light aircraft (article 2(8) NBR)
  - ▣ This opt-out allows microlights to decide to exclude certain manned light aircraft from the scope of the EASA system, making them subject to their national rules. The opt-out will not create obligations for other microlights.

# LAA CR – Goal



Open and unified rules for entry, overflight and exit from national airspace.



**Thank you for your attention**



Jan Pařez

[jan.parez@fs.cvut.cz](mailto:jan.parez@fs.cvut.cz)

Oldřich Štumbauer

[stumbauer@gmail.com](mailto:stumbauer@gmail.com)